



**National  
Multiple Sclerosis  
Society**

# An Interprofessional Student Program Providing Early Exposure to MS Care and Multidisciplinary Teams

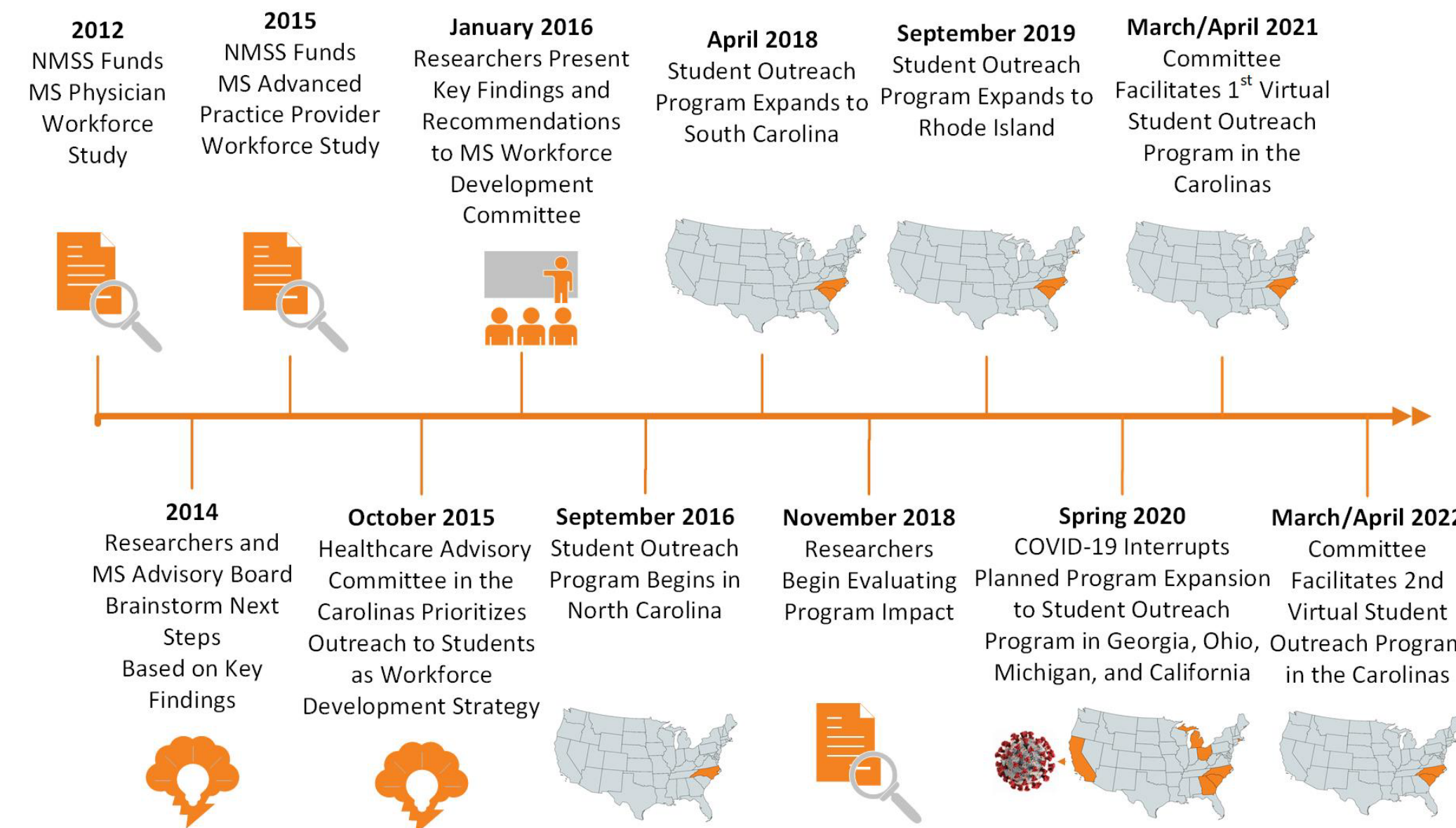
Stephanie Teixeira-Poit, PhD, MS<sup>1</sup>; Paige Dalton, JD<sup>2</sup>; Alicia Flach, PT, DPT<sup>3</sup>; Betsy Blake, PharmD, BCPS, FNAP<sup>3</sup>; Erica Gaskins, PT, DPT, MSCS<sup>4</sup>; Mona Bostick, RDN, LDN, MSCS<sup>5</sup>; Suma Shah, MD<sup>6</sup>; Daniel Webb, PhD<sup>1</sup>; & Cari Sgroi, PT, DPT, MSCS<sup>7</sup>

<sup>1</sup>North Carolina A&T State University, Greensboro, NC; <sup>2</sup>National Multiple Sclerosis Society, Greensboro, NC; <sup>3</sup>University of South Carolina, Columbia, SC; <sup>4</sup>Chapel Hill, NC; <sup>5</sup>Greensboro, NC; <sup>6</sup>Duke University, Durham, NC; <sup>7</sup>Movement Matters Physical Therapy, Huntersville, NC

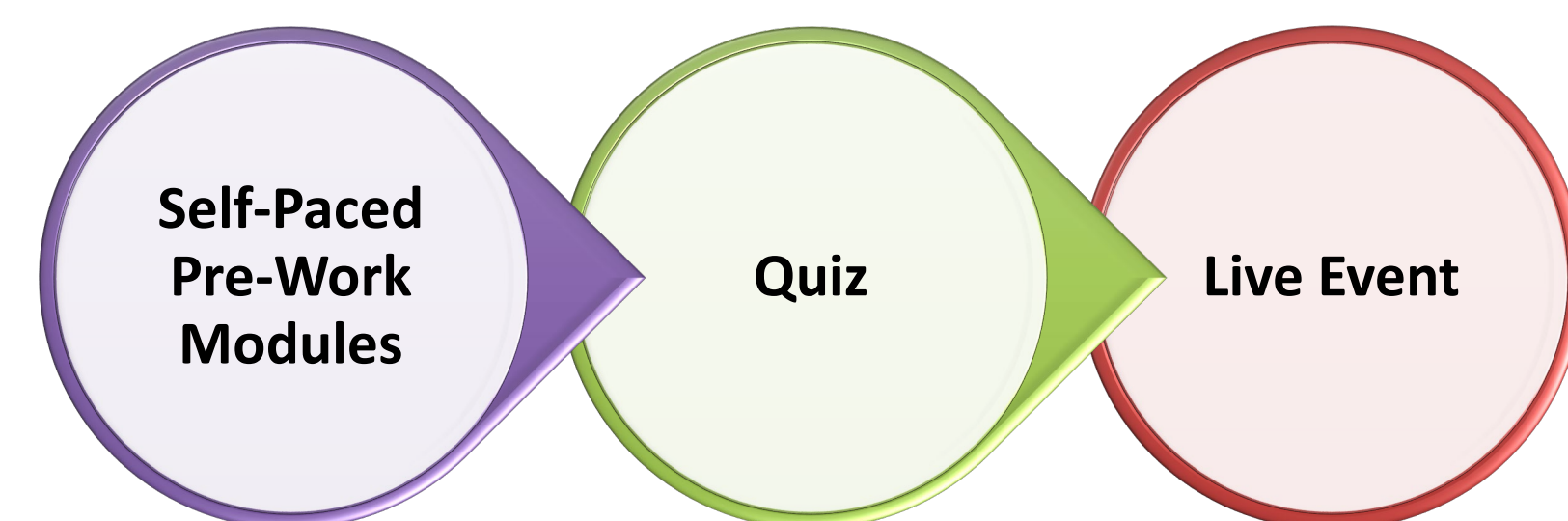
## Background

The demand for neurological care is outpacing the supply of neurologists with a looming shortage of neurologists who specialize in MS care.<sup>1</sup> Factors improving individuals' desire to provide MS care include the ability to improve patient quality of life, the enjoyment of interacting with MS patients, the perception that MS is a dynamic area with evolving treatment options, **exposure to MS care early in training**, and **exposure to multidisciplinary care**.<sup>2, 3</sup> To build interest in MS careers, the National Multiple Sclerosis Society (NMSS) Workforce Development Committee designed an interprofessional student program that provides early exposure to MS care and multidisciplinary teams. In 2016, the program began annually in North Carolina and expanded to other states (e.g., South Carolina, Rhode Island).

## Program Evolution



## Virtual Program Components

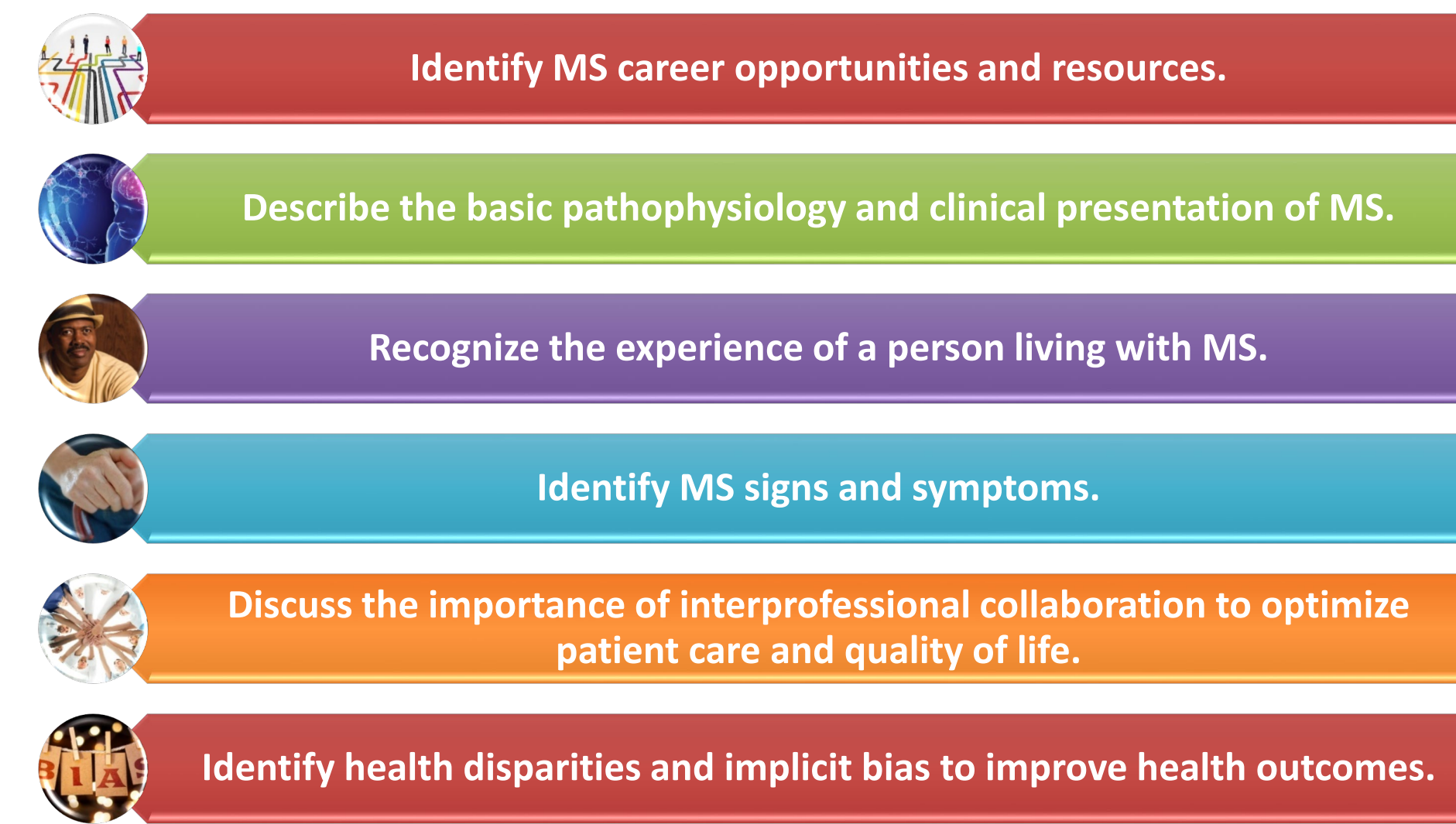


- Welcome & NMSS Resources
- MS, Symptoms, & Comprehensive Care
- Health Care Disparities
- Economic Burden of Living with MS

- Experience Presentation of Person Living with MS
- Intra- and Inter-Discipline Small Group Discussions Facilitated by Experts in Field

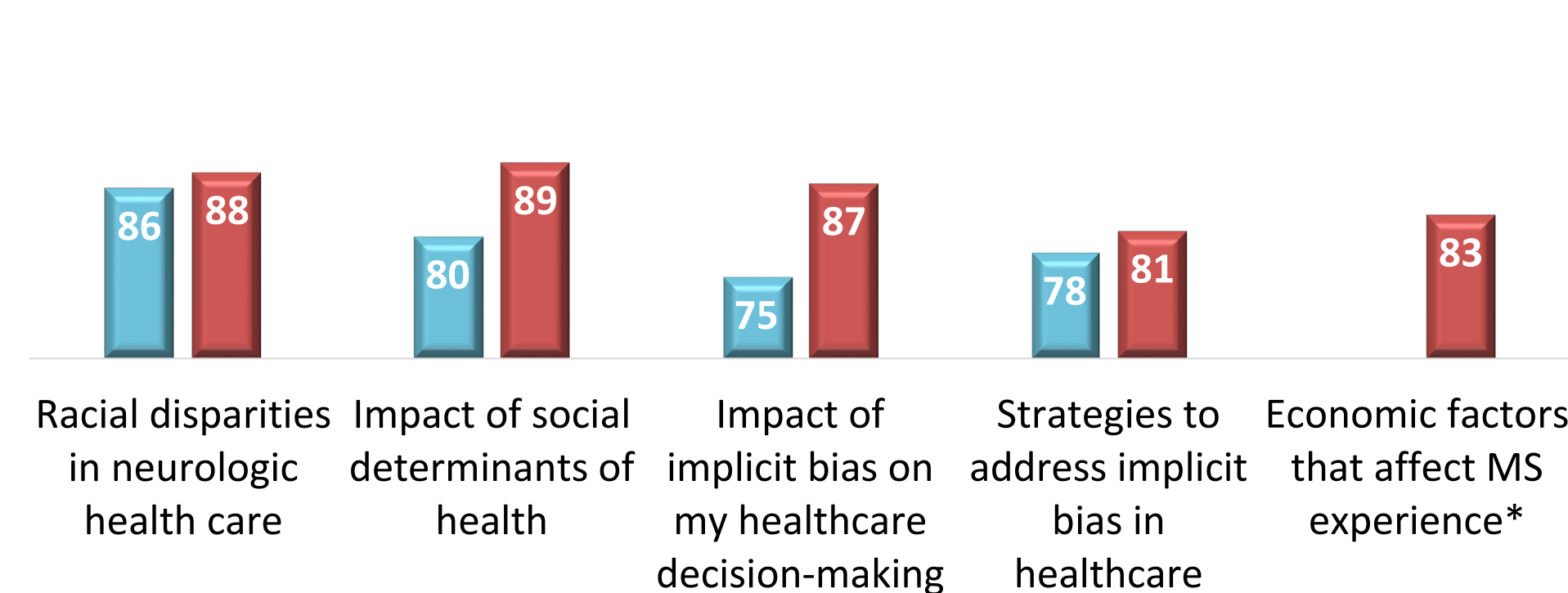
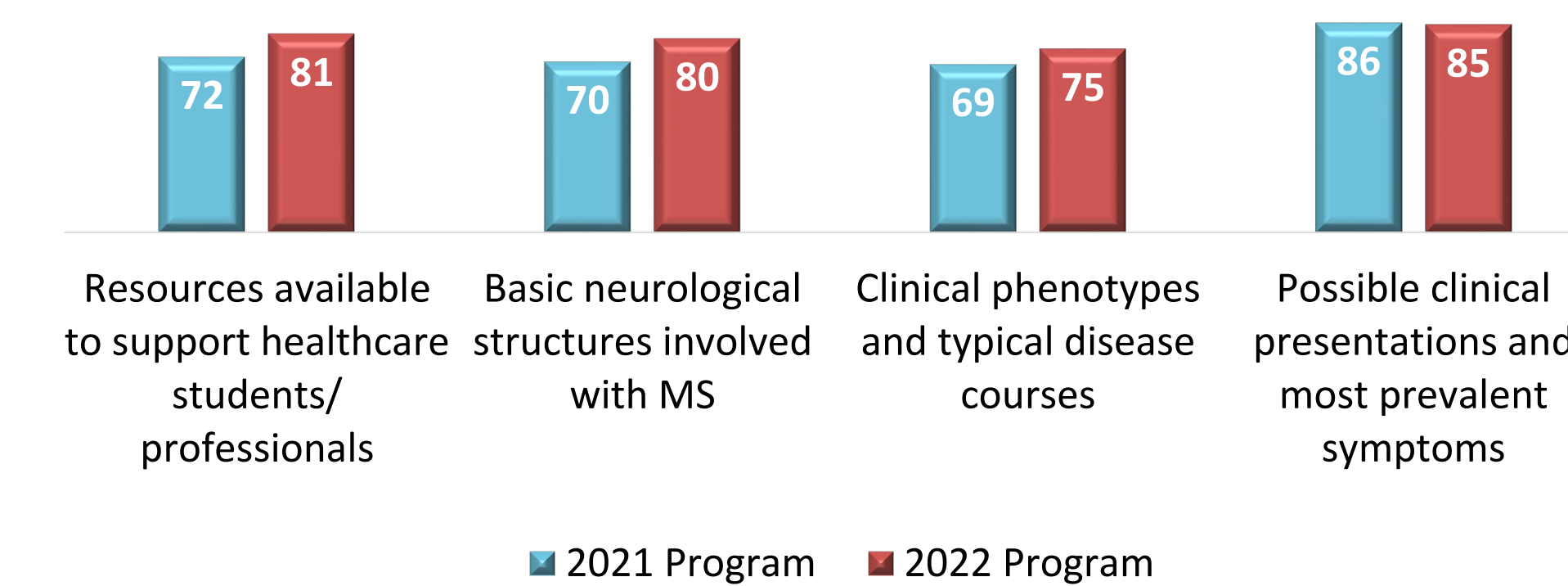
## Program Evaluation

Following each program, we administered a survey to participants to evaluate program learning objectives (N=43 respondents in 2021; N=86 respondents in 2022).



## Efficacy of Pre-Work Modules

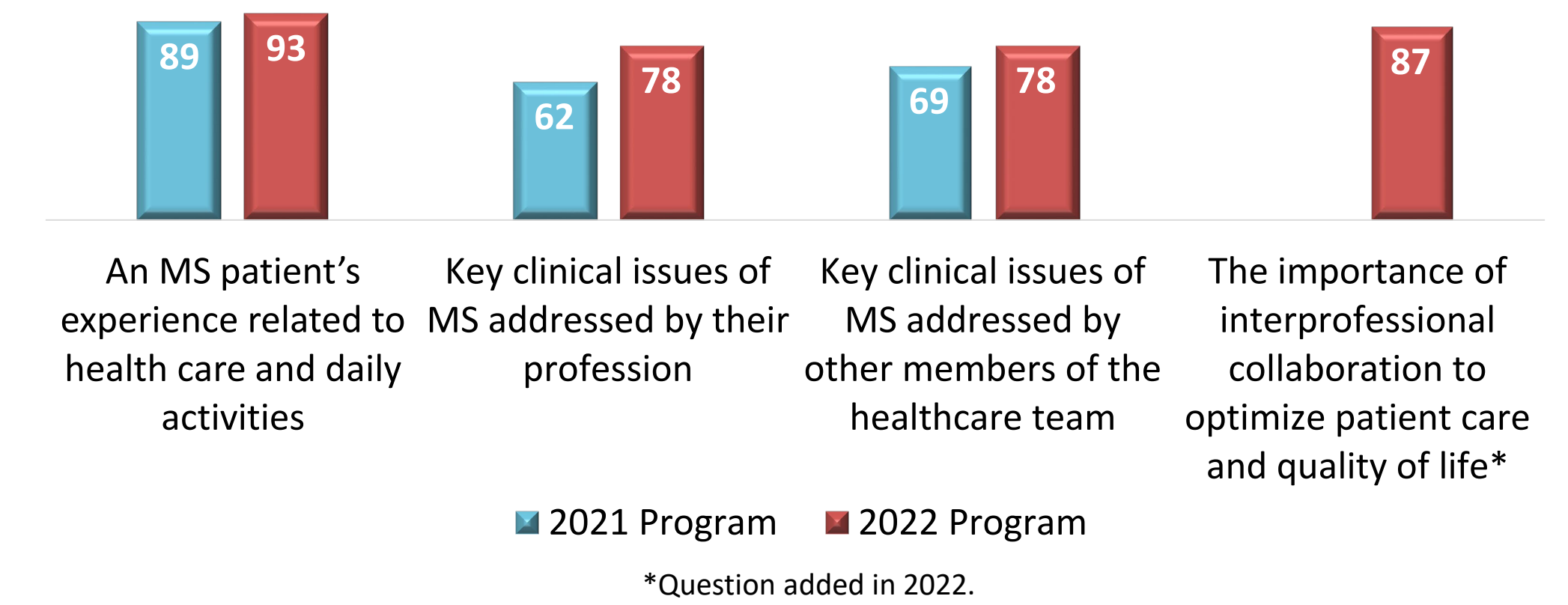
Percent of participants who “strongly agree” that the program helped them learn about...



\*The module “Economic Burden of Living with MS” was added to the program in 2022.

## Efficacy of Live Event

Percent of participants who “strongly agree” that the program helped them learn about...



## Participant Feedback



**Most Effective Part of Program:**  
*“Having a guest speaker who shared her experiences with MS really added to the session. Rather than it being a lecture about MS, it was more of a story that participants were able to follow. By sharing her experiences with specific health care professionals, it made me realize the impact that I may have on my patients in the future.”*

**Least Effective Part of Program:**  
*“I wish the live program was longer. I feel like there was still so much that could have been discussed or asked that we didn’t have time to get to.”*

## Program Impact

The interprofessional program is an effective strategy to expose early career professionals to MS care and multidisciplinary teams. In previous research, these are the factors providers reported increased their interest in pursuing MS care. In the 2022 program, about 70% of participants agreed that the program increased their **interest in pursuing a career in MS care**. We will use evaluation findings to continuously improve future programs, including allotting additional time for intra- and inter-discipline small group discussions in the live event. The program may translate into interest in providing MS care that can **address MS workforce shortages** and improve access to care for MS patients.

## References

- Halpern, M. T., Kane, H., Teixeira-Poit, S.M., Ford, C., Giesser, B., Halper, J., Johnson, S., LaRocca, G., Miller, A., and Ringel, S. (2018). Projecting the adequacy of the multiple sclerosis neurologist workforce. *International Journal of MS Care*, 20, 35-43.
- Halpern, M. T., Teixeira-Poit, S. M., Kane, H., Frost, A. C., Keating, M., & Olmsted, M. (2014). Interest in providing multiple sclerosis care and subspecializing in multiple sclerosis among neurology residents. *International Journal of MS Care*, 16, 26-38. doi:10.7224/1537-2073.2013-009
- Teixeira-Poit, S. M., Halpern, M. T., Kane, H., Frost, A. C., Keating, M., & Olmsted, M. (2015). Factors associated with interest in subspecialty training among neurology residents. *Teaching and Learning in Medicine*, 27, 138-146.